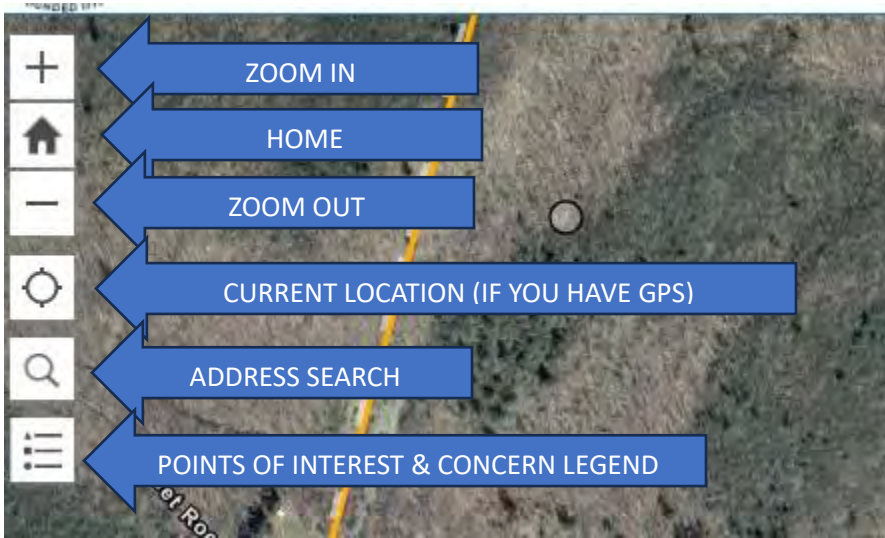


Crowdsource Mapping Tool 5 Step User Guide

Use the Crowdsource map on your cellphone or home computer.

Step 1: Go to <https://mountwashington-ma.gov/departments/conservation-commission/community-forest-stewardship/> and click the link [Mount Washington Crowdsource Map](#).

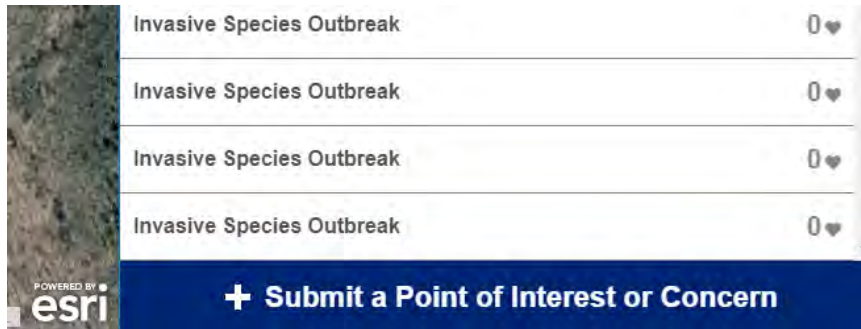
Introduction to Map Menu:



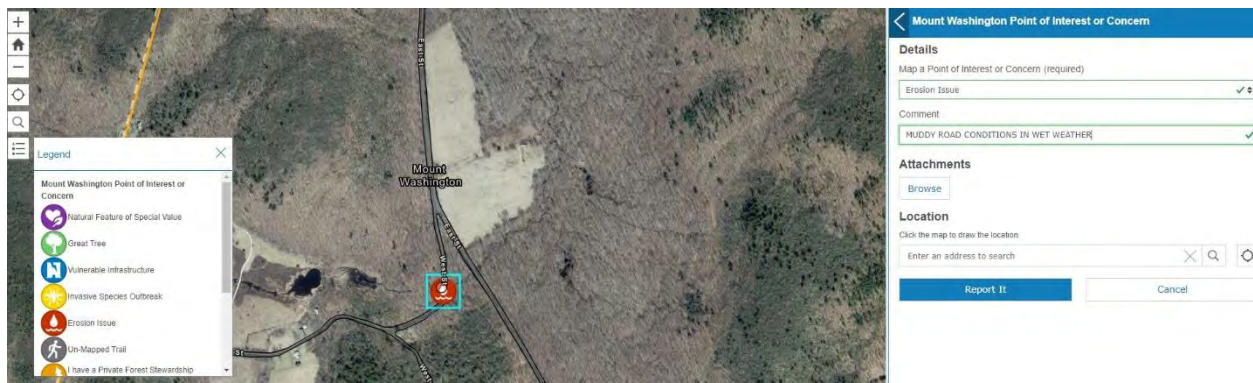
Step 2: When you find something you want to submit, use the + icon to zoom-in on the map until you find your observation location.



Step 3: Click-on the “Submit a Point of Interest or Concern” banner in the bottom right corner of your screen.



Step 4: From the Legend Drop Down click-on the icon that represents your observation and then move your cursor to the map and click-on the location of your observation. You will deposit a small gray dot on the map. Go to the Details window on the right side of you screen and select the point of interest or concern from the drop-down menu that matches your selected icon. Make a comment, upload a photo and additional location information (if available to you). Click-on “Report It.” Your observation has now been submitted for review and verification.



Step 5: You are now ready to be a Citizen Scientist! Congratulations!